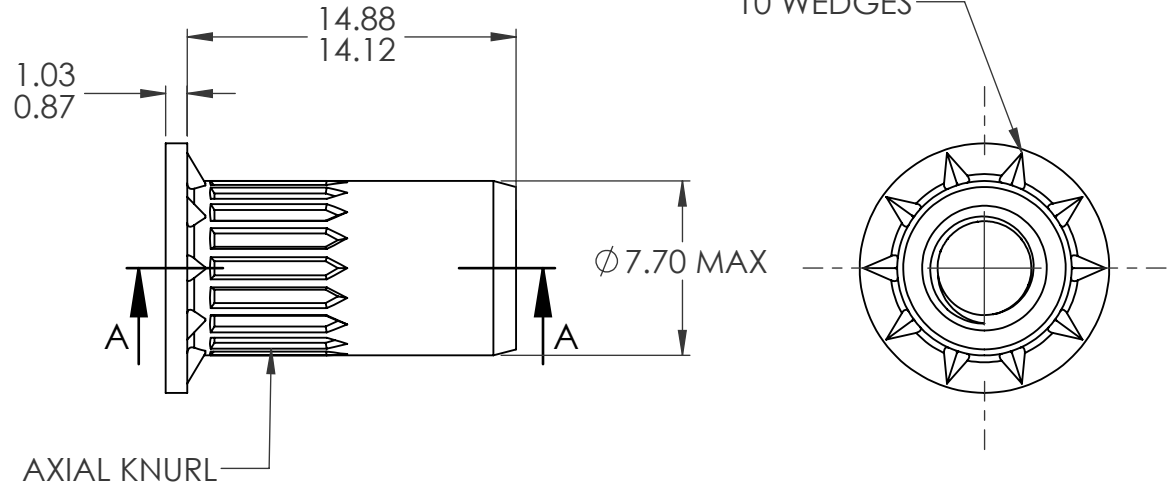
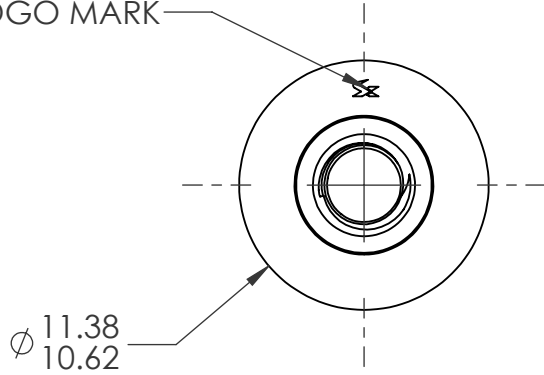


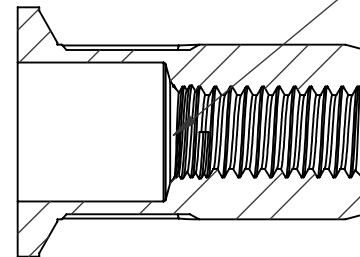
REVISIONS

REV.	DESCRIPTION	DATE	ECN	INITIAL
A	INITIAL RELEASE	10/1/2020	3692	TDJ
B	UPDATE BODY DIAMETER	09/07/2022	4105	MRA

LOGO MARK



M4X0.7 6H
PER ASME B1.13M
MINOR DIA.: 3.24-3.42



SECTION A-A

NOTE:

1. GRIP RANGE: 1.5 - 3.0
2. HOLE SIZE: 7.60 +0.15-0.00 AFTER ALL APPLIED FINISHES.
3. INSTALLED LENGTH: 10.5 MAX.
4. LUBRICATION: NONE
5. INSTALLATION TOOL: SPIN PULL

CUSTOMER APPROVAL:

DATE:

UNLESS OTHERWISE SPECIFIED:

DIMENSIONS ARE IN MILLIMETERS
TOLERANCES:
ANGULAR: MACH ± 1 BEND ± 1
ONE PLACE DECIMAL ± 0.3
TWO PLACE DECIMAL ± 0.08

INTERPRET GEOMETRIC
TOLERANCING PER:
ASME Y14.5M-1994

MATERIAL

C1008/C1010

FINISH

ZINC PLATE CLEAR TRIVALENT
CHROMATE PER SFS-01-001; SC1

NAME

DATE

DRAWN

TDJ

10/1/2020

CHECKED

CL

10/1/2020

ENG APPR.

JVK

10/1/2020

MFG APPR.

Q.A.

COMMENTS:

E-mail: info@sherex.com

www.sherex.com

Phone: 866-474-3739

Fax: 716-875-0358



TITLE:

**M4 OPEN END LARGE
FLANGE OPTISERT**

SIZE DWG. NO.

A

OPT2-470-3.0

REV

B

SCALE: 3:1

WEIGHT:

SHEET 1 OF 1